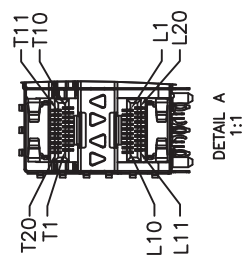
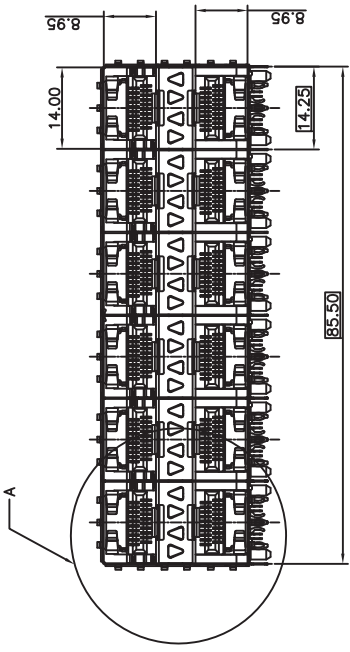


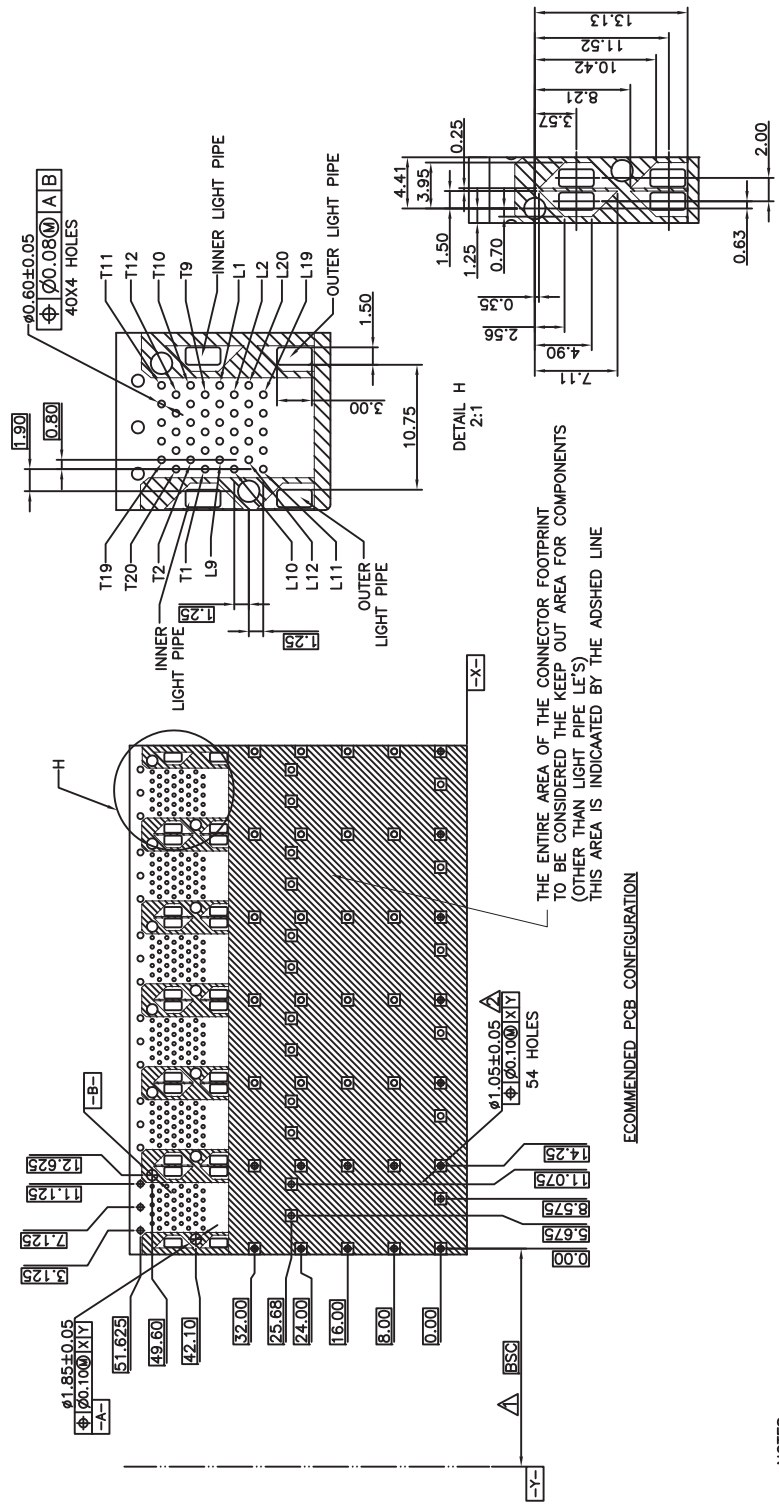
NOTES:

MATERIAL:  
 CAGE: NICKEL SILVER, THICKNESS 0.25mm  
 LIGHT PIPE: POLYCARBONATE, COLOR: CLEAR.  
 CONNECTOR:  
 PLASTIC HOUSING: HIGH TEMPERATURE LCP, UL94 V-0.  
 SPRING: STAINLESS STEEL, THICKNESS 0.20mm  
 CONTACTS: PHOSPHOR BRONZE, THICKNESS 0.20mm  
 PLATING: 15μ" MIN. GOLD ON MATING AREA,  
 150μ" MIN. MATE TIN ON SOLDER TAILS.  
 PACKAGING: TRAY PACKAGING.  
 TEMPERATURE RANGE: -40°C TO +85°C



TITLE		SFP 2X6 CAGE+CONNECTOR		
PART NO.		HH10-IN3G230-04B		
DRAW	Iror	DATE	2016-12-22	GENERAL TOLERANCE
CHECK	Iror	DATE	2016-12-22	.X±0.20
APPROVE	Victor	DATE	2016-12-22	.XX±0.15
				.XXX±0.10
				SCALE: 1:1
				SHEET:1/3
				UNIT:MM
				SIZE: A4
				REVA

东莞市涪程电子科技有限公司



THE ENTIRE AREA OF THE CONNECTOR FOOTPRINT TO BE CONSIDERED THE KEEP OUT AREA FOR COMPONENTS (OTHER THAN LIGHT PIPE LE'S) THIS AREA IS INDICATED BY THE ADISHED LINE

ECOMMENDED PCB CONFIGURATION

NOTES:

1. DATUM AND BASIC DIMENSIONS ESTABLISHED BY CUSTOMER.
2. 1.05 mm DIAMETER HOLES ARE CHASSIS GROUND.
3. LED HEIGHT LESS THAN 0.80 MM.

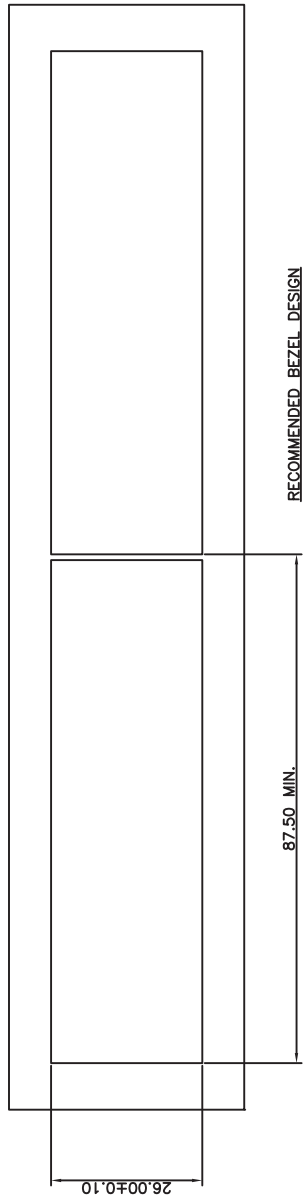
DETAIL LIGHT PIPE LOCATION AND OTHER ZONES  
DETAIL K  
2:1

东莞市浚程电子科技有限公司

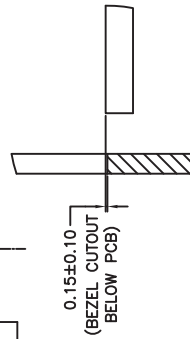
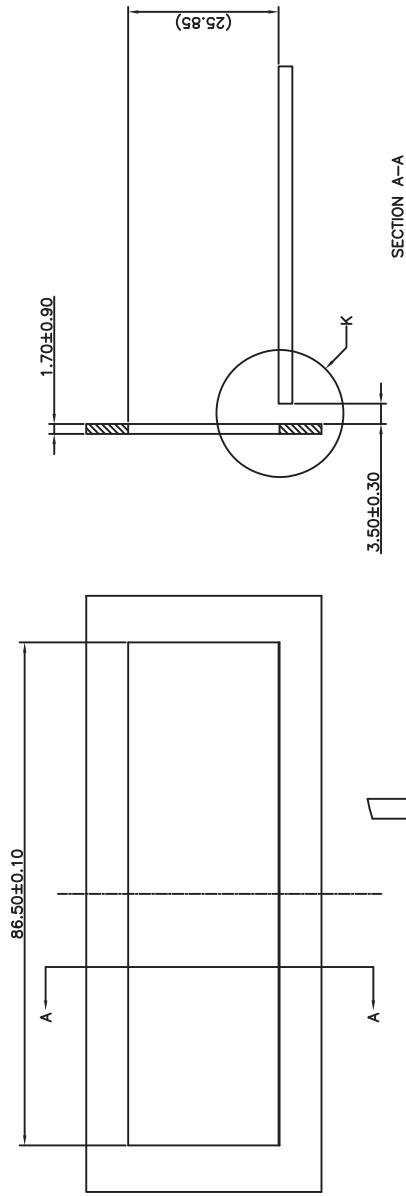
TITLE  
SFP 2X6 CAGE+CONNECTOR

PART NO.		HH10-IN3G230-04B		GENERAL TOLERANCE		UNIT:MM		SIZE: A4	
DRAW	Ivor	DATE	2016-12-22	.X±0.20	.X±1'	SCALE: 1:1		SHEET:2/3	
CHECK	Ivor	DATE	2016-12-22	.XX±0.15	.XX±5'			REV:A	
APPROVE	Victor	DATE	2016-12-22	.XXX±0.10	.XXX±5'				

RoHS COMPLIANT



RECOMMENDED BEZEL DESIGN



DETAIL K  
2:1

TITLE		SFP 2X6 CAGE+CONNECTOR			东莞市涪程电子科技有限公司	
PART NO.		HH10-IN3G230-04B			UNIT:MM	
DRAW	Iror	DATE	2016-12-22	GENERAL TOLERANCE		SIZE: A4
CHECK	Iror	DATE	2016-12-22	.X±0.20	.X±1"	SHEET:2/3
APPROVE	Victor	DATE	2016-12-22	.XX±0.15	.XX±5"	
				.XXX±0.10	SCALE: 1:1	REVA